



InteliCare

Supporting Care Providers to deliver improved care outcomes

InteliCare Holdings Limited (ASX:ICR)

Investor Presentation

November 2023

Daniel Pilbrow

Chief Executive Officer



Important Notice / Disclaimer



This presentation has been prepared by InteliCare Holdings Limited and its related entities (the “Company”). It does not purport to contain all the information that a prospective investor may require in connection with any potential investment in the Company. You should not treat the contents of this presentation, or any information provided in connection with it, as financial advice, financial product advice or advice relating to legal, taxation or investment matters.

No representation or warranty (whether express or implied) is made by the Company or any of its officers, advisers, agents or employees as to the accuracy, completeness or reasonableness of the information, statements, opinions or matters (express or implied) arising out of, contained in or derived from this presentation or provided in connection with it, or any omission from this presentation, nor as to the attainability of any estimates, forecasts or projections set out in this presentation.

This presentation is provided expressly on the basis that you will carry out your own independent inquiries into the matters contained in the presentation and make your own independent decisions about the affairs, financial position or prospects of the Company. The Company reserves the right to update, amend or supplement the information at any time in its absolute discretion (without incurring any obligation to do so).

Neither the Company, nor its related bodies corporate, officers, their advisers, agents and employees accept any responsibility or liability to you or to any other person or entity arising out of this presentation including pursuant to the general law (whether for negligence, under statute or otherwise), or under the Australian Securities and Investments Commission Act 2001, Corporations Act 2001, Competition and Consumer Act 2010 or any corresponding provision of any Australian state or territory legislation (or the law of any similar legislation in any other jurisdiction), or similar provision under any applicable law. Any such responsibility or liability is, to the maximum extent permitted by law, expressly disclaimed and excluded.

Nothing in this material should be construed as either an offer to sell or a solicitation of an offer to buy or sell securities. It does not include all available information and should not be used in isolation as a basis to invest in the Company.

Future matters

This presentation contains reference to certain intentions, expectations, future plans, strategy and prospects of the Company. Those intentions, expectations, future plans, strategy and prospects may or may not be achieved. They are based on certain assumptions, which may not be met or on which views may differ and may be affected by known and unknown risks. The performance and operations of the Company may be influenced by a number of factors, many of which are outside the control of the Company. No representation or warranty, express or implied, is made by the Company, or any of its directors, officers, employees, advisers or agents that any intentions, expectations or plans will be achieved either totally or partially or that any particular rate of return will be achieved. Given the risks and uncertainties that may cause the Company’s actual future results, performance or achievements to be materially different from those expected, planned or intended, recipients should not place undue reliance on these intentions, expectations, future plans, strategy and prospects. The Company does not warrant or represent that the actual results, performance or achievements will be as expected, planned or intended.

InteliCare – a holistic care solution



InteliCare develops a 360-degree view of Health and Wellbeing.

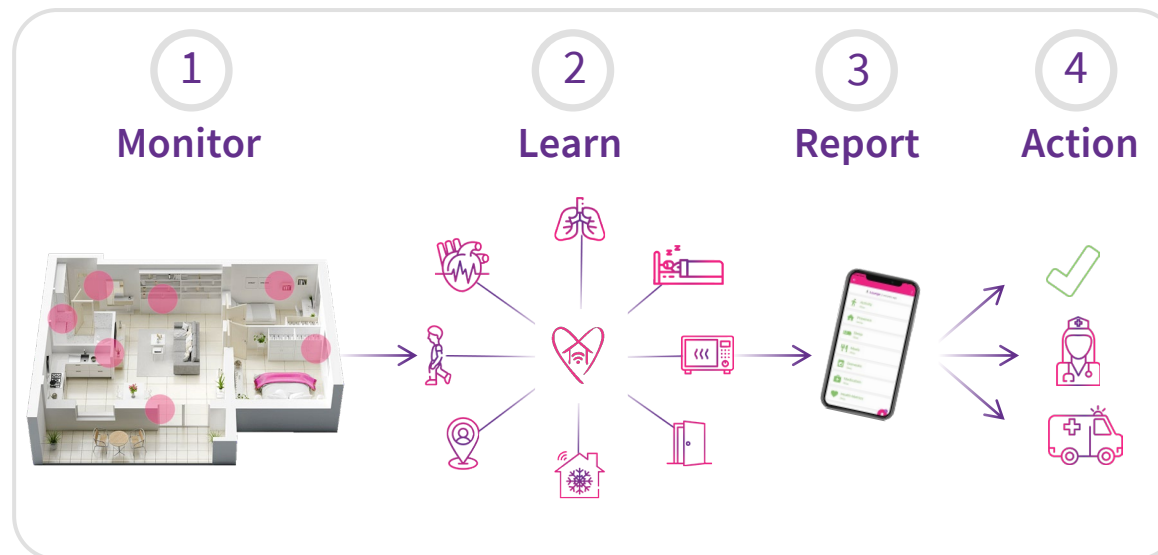
Integrates with existing & emerging sensors and devices.

Tracks and understands patient activity, behaviours and health metrics

Delivers data and reporting to optimise care provision, staffing, and resourcing.

What is InteliCare?

- AI driven digital health platform that sits at the centre of the care provider's operations, capturing and distilling data from existing and emerging sensors/inputs to provide insights, analysis, reporting and actions
- Proprietary Code & AI Algorithm allowing for bespoke care provider solutions
- Sensor agnostic platform (fully integratable) for 3rd party sensors and other data inputs.



Customer Verticals

Applicability of the InteliCare solution across;



Aged Care



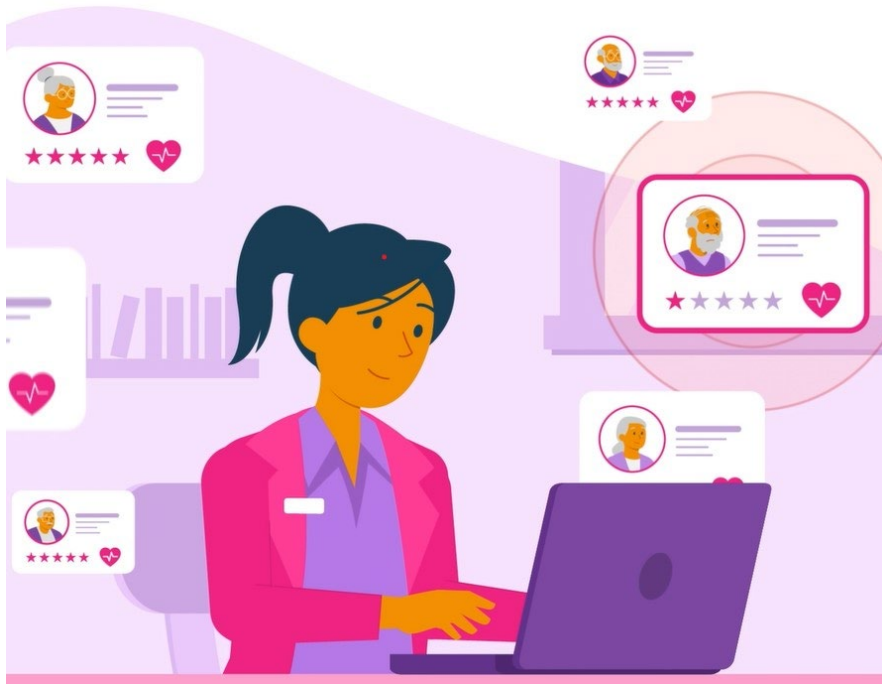
Disability Care



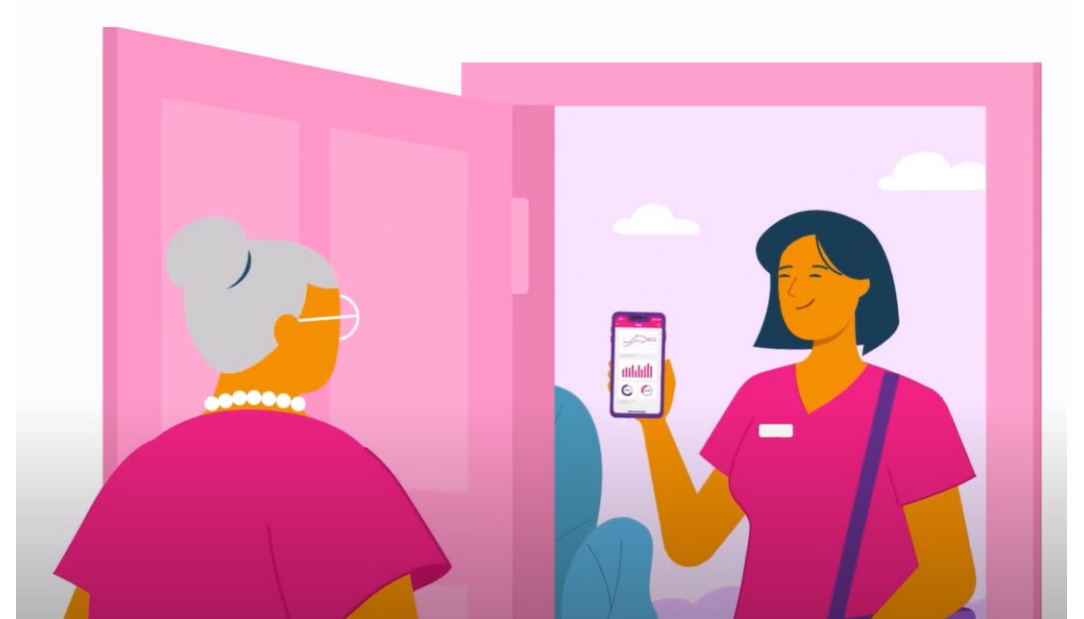
Hospitals and healthcare



Home Care



Residential care animation (click picture above)



Home based care animation (click picture above)

- AI leading technology built, tested & commencing B2B commercialisation

- Addresses significant current and future healthcare challenges of staffing, compliance and cost

- Evolving market with considerable and growing private and government investment

- Strategic pilot programs underway in multiple markets

- Board & Leadership team with extensive depth



InteliCare

- Manages health metrics, activity & behaviours in one place supporting improved quality of care

- Delivers Real Time Data from existing and emerging technology/innovation

- Integrates into all healthcare environments delivering synergy across existing and emerging technology and innovation

- Compatible with 3rd party devices and infrastructure already installed

- Peace of mind for providers, staff, patients and families

1

Monitor

Smart sensors and wearables gather client activity and wellbeing data

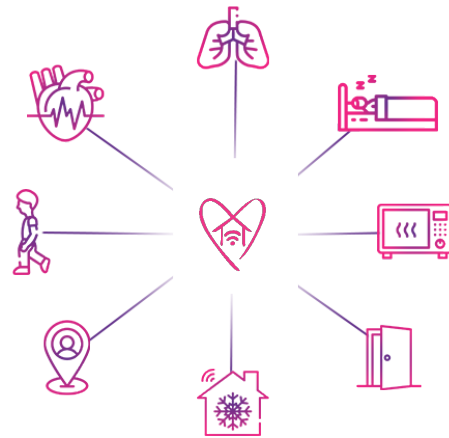


Wearable technologies, vitals monitoring and emergency alerting/duress devices are also be integrated

2

Learn

InteliCare tracks and understands patient activity, behaviours and health metrics

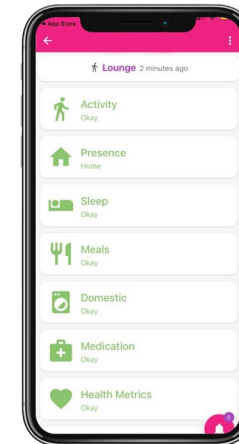


Health metrics, social activity and household activity

3

Report

Receive daily notifications and actionable insights from the InteliCare app or dashboard



“All okay” daily messages. Alerts when there is a change in normal behaviour

4

Action

Live and historical data empowers staff to:

- Prioritise tasks
- Deliver care proactively, prevent deterioration and optimise care outcomes
- Remotely monitor and triage multiple patients
- Identifying areas of efficiency



InteliCare – monitoring, prevention & detection



Dashboard and app

Tap into 24/7 data, real world evidence and reports.

Emergency and duress alerts

Integrate a range of 4G compliant emergency and incident detection options.



Vitals and health metrics

Use manual and automated feeds and a range of IoT devices and biopatches to track and improve health and wellness with Health Metrics.

- | | | | |
|--|----------------|--|---------------|
| | Respiration | | Heart rate |
| | Blood glucose | | Lung capacity |
| | Blood oxygen | | Activity |
| | Blood pressure | | Weight |

Core client intelligence

Establish a behaviour baseline and highlight changes.

- | | | | |
|--|------------------|--|-----------------|
| | Sleep quality | | Bathroom visits |
| | Meal preparation | | Movement |
| | Social isolation | | Door alert |
| | Night wandering | | |

Experienced Board and Executive Team



Dr Neale Fong

Chairman & Non-Executive Director

- Over 35 years' experience in the health services and strategic planning.
- CEO of Bethesda Hospital
- Chair, WA Country Health Service Board.
- Chair, Australian College of Health Service Management
- Chair of ASX listed Little Green Pharma (ASX:LGP)
- Chair, WA Institute of Sport



Greg Leach

Co-Founder & Non-Executive Director

- Co-Founder and CTO of Empired Ltd (EPD. ASX) for 16 years leading to \$140m+ market cap company on ASX.
- 30 years technology industry experience



Cam Ansell

Non-Executive Director

- Cam Ansell, has over 25 years' experience in the aged care and retirement living sector.
- Working with retirement and aged care services in Australia, New Zealand and USA, he performed operational and financial reviews, identifying market opportunities.



Daniel Pilbrow

CEO

- Over 25 years' experience in the health, aged care and disability sectors, both internationally and nationally.
- Executive Director NSW & Head of National M&A, The Silver Chain Group
- Investment Director, AMP Capital
- Chief Strategy Officer, Opal Aged Care
- Executive Director Strategy & Redevelopment, Peter MacCallum Cancer Centre



Mike Tappenden

CTO & Co-Founder

- Managed programs of work valued up to A\$200 million, project teams of up to 50 people and worked with board-level stakeholders of tier-1 corporates.
- 25 years' technology industry experience
- BDM & Lead Consultant, Empired Ltd (EPD:ASX):
- Director, Frontline Services Ltd
- Technology Architect, Woodside Energy

Corporate Overview



Capital Structure

ASX Code	ICR
Listing Date	25 May 2020
Shares on Issue	210,617,907
Options on issue	104,435,137
Current share price (02/11/23)	\$0.016
Market-capitalisation (@ \$0.016)	\$3,369,886

Major Shareholders

Directors	18%
Top 20	65%



The Care Sector – Under-Resourced and Facing Numerous Challenges



Aged, Disability and Health Care Sectors are facing numerous and distinct challenges



Aged Care & Seniors Living

Residential Care,
Home based care,
Retirement Living

- Staff shortages & efficiency
- Sector Reforms (Royal Commission)
- Regulatory compliance
- High Cost of required care
- Incident detection and prevention



Disability Care

NDIS & Care in
the home

- Enhancing independence
- Opportunities to provide high quality care at home
- Cost & impact of accurate monitoring
- Night-time staff costs



Health Care

Hospital Services &
providing health care
services at home

- Remote patient monitoring
- Cost of in-hospital care vs hospital at home
- Staff spending time on high value activities



Policy

- Workforce Shortages are impacting quality of care for Aged, Disability and Health care sectors
- Federal Government funding is becoming available



Technology Landscape

- No leading digital platform in market
- Existing technology solutions are niche and singular in focus
- No preventative care solution in market
- Until now care providers have seen technology as an add-on rather than a solution



Artificial Intelligence (AI)

- Opportunity to build a leading AI driven digital care platform which;
 - Delivers better care outcomes
 - Supports remote patient monitoring (RPM)
 - Improves staff efficiency and effectiveness in providing care

InteliCare Value Proposition



InteliCare allows its B2B customers to provide better care for their clients, improved efficiency for staff and potentially improved revenue growth

Customers need	Efficient workforce and staffing	Centralising data in one platform	Improved health outcomes	Regulatory requirements	Differentiation from competitors
InteliCare Feature	InteliCare monitors clients/patients in real-time, enabling staff to attend/respond where and when needed	InteliCare can aggregate data already being captured by customers into one centralised platform	InteliCare offers event detection (ie. falls risk monitoring), preventative care (understands bathroom schedules to reduce UTI risk etc.) and health metrics monitoring	InteliCare's reporting framework supports the meeting of governance and regulatory requirements (and improved cost & risk management)	InteliCare is customisable & device agnostic providing B2B customers with a clear differentiation from other care providers

InteliCare Revenue & Sales model

Revenue is generated at the following stages:

- Upfront Hardware set-up cost
- Installation of sensors
- Annual InteliCare SaaS platform licence
- Scalable and repeatable model

Example pricing on 1 room per annum*

Upfront Hardware Cost	\$ 1,500 - \$4,000
SaaS Fees	\$550 - \$800
Installation	\$300 - \$500
Total for year 1	\$2,350 - \$5,300

**This example is for illustrative purposes. Pricing is provided in a range as the specifications for each room differ depending on the care context, and the monitoring and budget requirements of the Care provider. Quotes are provided on either a site or full organisational basis.*



Target Markets



Residential Aged Care

- For senior Australians no longer able to live independently. Accommodation and personal care 24 hours a day. Access to nursing and general health care services.



Home Care

- Home Care Package Program (HCPP) & Commonwealth Home Support Program (CHSP) are government funded programs to provide care to seniors who live independently at home.
- Support at Home (SAH) funding reforms to be introduced from July 2025 requires care providers to innovate now



Retirement Living

- Increasingly, retirement living options include more diversity of choice, where the ‘seniors housing’ comes with optional care and support services to help people stay living independently.



Disability Care






- Specialist disability accommodation (SDA) is designed for people with extreme functional impairment or very high support needs. These have accessible features to help residents live more independently and allow other supports to be delivered better or more safely.
- Supported Independent Living (SIL) is NDIS-funded support helping with independent living & skill building.






Healthcare

- Healthcare services throughout Australia are provided in a number of forms including acute and sub-acute care to primary (general practitioner) and community care. Increasingly there is a move towards hospitals being centres for the most acute care, and a trend to more care being provided at home and in the community.
- Remote Patient Monitoring (RPM) is a growth segment for “virtual” health care provision. This requires enablement through new care processes, technology systems and interoperable, real-time data.

Target Markets by size

	Providers	Facilities/Outlets	Places/Packages/Participants	Industry Investment
 Residential Aged Care	805	2,671	219,965	\$14.6b (Fed Govt funding)
 Home Care	916 (HCP) 1407 (CHSP) 134 (Other)	6,623	261,314 (HCP) 818,228 (CHSP) 11,767 (Other)	\$10.2b (Fed Govt funding)
 Retirement Living	450 approx.	2,500	263,000	> \$5.0b
 Disability Care	5,191	8,128 (SDA)	610,502 Total NDIS 23,092 SDA Funding 31,509 SIL Supports	\$35.7b Total NDIS \$365m SDA Funding \$11.5b SIL Supports
 Healthcare	697 Public Hospitals 657 Private Hospitals	8.8 m ED Presentations 11.6m Hospital Admissions	\$220b Total Healthcare \$70.5b Public Hospital \$19.1b Private Hospital \$315m Telehealth spend \$1.5b APAC RPM spend	

		InteliCare benefit		
 Residential Aged Care Home Care Retirement Living		<ul style="list-style-type: none">• Staff efficiency and effectiveness (particularly in rural settings)• Incident prevention / detection (including falls etc.)• Supporting compliance and governance	<ul style="list-style-type: none">• Revenue driver• Marketing / point of difference	
	 Disability Care		<ul style="list-style-type: none">• Increased participant independence• Promotes evidence-driven and proactive care• Staff efficiency, effectiveness and workload management	<ul style="list-style-type: none">• Supporting compliance and governance• Revenue driver through increased services
	 Healthcare		<ul style="list-style-type: none">• Opportunities to support:<ul style="list-style-type: none">– early discharge and– virtual HITH models– Chronic disease management	<ul style="list-style-type: none">• Assists the bed shortage crisis – assists in potentially freeing up beds<ul style="list-style-type: none">– i.e. patients being managed in the right environment for them• Acute real-time monitoring of vitals including blood pressure and heart rate.

Early adopters



Provider	Location	Market segment	Pilot Size	Date Commenced	Opportunity Size
Government of Western Australia WA Country Health Service	WA	Residential Aged Care	6 rooms (12-month subs)	Q3 2022	26 Resi Care sites
Bethanie	WA	Residential Aged Care	10 rooms (3-month subs)	Q1 2022	13 Resi Care sites (plus Retirement Living, Home Care etc.)
ST JOHN OF GOD Health Care	Vic	Supported Independent Living (NDIS)	10 houses/60 rooms (12-month subs)	Q3 2021	Disability services in Vic & NZ Hospital/Health Services in Vic, WA & NZ
melba support services	Vic	Supported Independent Living (NDIS)	15 rooms (12-month subs)	Q1 2021	1400 NDIS clients
Government of Western Australia Department of Communities	WA	Correctional services/Disability	10 residents (ongoing subs)	Q3 2022	TBC
Peter Mac Peter MacCallum Cancer Centre Victoria Australia	Vic	Hospital/Healthcare RPM	40 patients (6 months)	Q3 2023	44,741 inpatient admissions p.a. 3,307 elective surgical patients Access to Parkville precinct hospitals
Leading Healthcare provider (currently under confidentiality)	-	Hospital/Healthcare RPM	40 patients (3 months)	Q4 2023	Aims to support 18,000 hospital in the home admissions

*Investors should note whilst pilots are an essential step in the commercialisation process of InteliCare there can be no guarantee each pilot will be successful and lead to broader commercial deployment

“The technology gives us constant snapshots of a resident’s routine and activity without having to wait for more obvious signs of changes which means we can take a proactive approach to their care,” Tina said.

“The technology allows us to view and understand residents’ activity levels. Some of our residents have told us they are having higher quality of sleep as the technology reduces night-time disruptions from staff, and it gives them greater peace of mind.”

WA COUNTRY HEALTH SERVICE ANNUAL REPORT 2022-23

Contents Overview Governance Agency performance Significant issues Disclosure and compliance Appendices 41

A year beyond compare in country healthcare

Embracing technology to help aged care residents live independently for longer.

We are piloting an innovative assistive technology solution that’s improving safety and independence for aged care residents at Koolberrin Lodge in Narembeen.

The pilot program, which has been running since January 2023, harnesses assistive living technology created by InteliCare, using discreet sensors and emergency alerts to detect incidents earlier and give staff a clearer picture of residents’ daily routines and care needs.

Executive Director Wheatbelt Rachele Ferrari said the technology allows staff to take proactive action based on resident-specific insights.

“We’re always looking for new ways to help residents in our aged care facilities live as independently as possible and close to their support networks and loved ones,” Rachele said.

“By investing in digital opportunities, we’re helping to better support healthy ageing in place for country communities.

“This technology enables more informed care planning between residents, family and staff by providing a better understanding of resident needs.”

Koolberrin Lodge Coordinator Tina Gausden said residents, their families and staff have already started to see the benefits of the technology.



Koolberrin Lodge Coordinator Tina Gausden and Patient Care Assistant Sue Harper.

“The technology gives us constant snapshots of a resident’s routine and activity without having to wait for more obvious signs of changes which means we can take a proactive approach to their care,” Tina said.

“The technology allows us to view and understand residents’ activity levels. Some of our residents have told us they are having higher quality of sleep as the technology reduces night-time disruptions from staff, and it gives them greater peace of mind.”

Strategy and deliverables for next 6 months



Strategy

- Continue to engage large industry providers for strategic partnerships
- Leveraging partners to execute defined qualified sales pipeline
 - E.g. JNC
- Convert existing pilots into broader deployments
 - E.g. WACHS
- Continue to engage with leading healthcare providers to enhance remote patient monitoring capabilities
 - E.g. Peter Mac
- Continue to refine the platform based on customer feedback and requirements

Customers

- Enter into binding agreement with first JNC client for deployment of InteliCare Q2 FY24
- Enter into binding agreement with second JNC client in Q3 CY24
- Enter into 2 further pilots with other aged care providers Q3 FY24
- Complete WACHS pilot and reach commercial agreement for broader deployment Q3 FY24
- Enter into a further RPM pilot with another leading healthcare institution Q2 FY24
- Conclude initial pilot with Peter Mac and finalise steps for expanded 2nd phase pilot Q4 FY24
- Conclude initial pilot with leading health care provider (currently under confidentiality) and finalise steps for expanded 2nd phase pilot Q4 FY24
- Enter into strategic partnership with industry leader with an initial pilot Q2 FY23

Platform

- Continue to develop Dynamic Falls Risk Tracking capability
 - Using multiple data points to develop predictive capabilities for managing an individual's falls risk
- Currently developing a fully integrated capability for 'real time location' awareness
 - Including facility level staff location enabled duress, analytics, asset management and reporting.
 - Roadmap includes to deliver additional insights for RAC residents to support data for aged care quality standards reporting.
- Enhance mobility tracking capability
- Further refine and improve reporting capability to continue to meet compliance and regulatory obligations
- Continue to integrate 3rd party devices and wearables to expand capability of InteliCare for RPM to support target markets

Investment Highlights – Why Now?



Board and Exec team are in place with deep industry experience and connections



InteliCare is positioned for the future

Consolidate InteliCare as one of the leading providers of an AI platform in the health, aged and disability care sectors.

Strategic shift in market sentiment with progressive clients now seeing the necessity for data driven care.

Better health outcomes and improved customer experience - Keeping people at home

- Artificial intelligence can provide valuable insights into people's health and wellbeing which assists providers to better tailor and deliver effective & efficient care and clients will experience better health outcomes

The Australian aged care, disability and health care systems are currently unsustainable and with significant workforce challenges – sectors are poised for significant change

- Growing market with considerable increases in government investment required, with a goal of keeping people at home as much as possible
- Technology is part of the solution and there is a current gap in the market

InteliCare's AI technology is sector leading and ready for commercialisation

- Platform/technology largely developed and now beginning to be commercialised through strategic pilot projects underway across aged care (home-based care and residential), disability care and healthcare sectors.



APPENDICES



InteliCare – Health metrics monitoring



Miss Colt

Home, Messages, Calendar, Notifications, Power, Profile, Lock, Settings, 99+ Notifications, MT Mike Tappenden

TREND, ACTIVITY, HEALTH METRICS, SLEEP, MEALS, PRESENCE, DOMESTIC, NOTIFICATIONS, SYSTEM HEALTH

Health Metrics

Lastest data from health metrics

Not Synced

Blood Pressure

131/77 mmHg
9 hours ago

Time	Systolic Blood Pressure	Diastolic Blood Pressure
6 days ago	135	85
5 days ago	130	80
4 days ago	125	75
3 days ago	120	70
2 days ago	125	75
a day ago	130	80
9 hours ago	131	77

Weight

Weight/BMI
75 Kg/19 BMI
9 hours ago

Time	Weight	BMI
6 days ago	75	19
5 days ago	75	19
4 days ago	75	19
3 days ago	75	19
2 days ago	75	19
a day ago	75	19
9 hours ago	75	19

Body Temperature

37 °C
9 hours ago

Time	Body Temperature
6 days ago	37.0
5 days ago	37.0
4 days ago	37.0
3 days ago	37.0
2 days ago	37.0
a day ago	37.0
9 hours ago	37.0

Respiration

16 RPM
9 hours ago

Time	Respiration
6 days ago	16
5 days ago	16
4 days ago	16
3 days ago	16
2 days ago	16
a day ago	16
9 hours ago	16

Heart Rate

Average/Resting
75 ABPM/66 BPM
9 hours ago

Time	Average Heart Rate	Resting Heart Rate
6 days ago	75	66
5 days ago	75	66
4 days ago	75	66
3 days ago	75	66
2 days ago	75	66
a day ago	75	66
9 hours ago	75	66

Blood Oxygenation

96 %
9 hours ago

Time	Blood Oxygenation
6 days ago	96
5 days ago	96
4 days ago	96
3 days ago	96
2 days ago	96
a day ago	96
9 hours ago	96

Blood Glucose

6 mmol/L
9 hours ago

Time	Blood Glucose
6 days ago	6
5 days ago	6
4 days ago	6
3 days ago	6
2 days ago	6
a day ago	6
9 hours ago	6

Activity

4529 Steps
9 hours ago

Time	Steps
6 days ago	5000
5 days ago	5000
4 days ago	6000
3 days ago	6000
2 days ago	5000
a day ago	5000
9 hours ago	4529

LAST HOUR, 24 H, 7 D, 30 D, 6 M

Insights and intelligence to care



Agnostic approach to hardware choice, giving providers flexibility in monitoring options.



Integrated ecology of sensors and analytics - with the ability to design the monitoring packages according to the service requirements.



Multiple data points create a composite picture for a more accurate patient information profile.

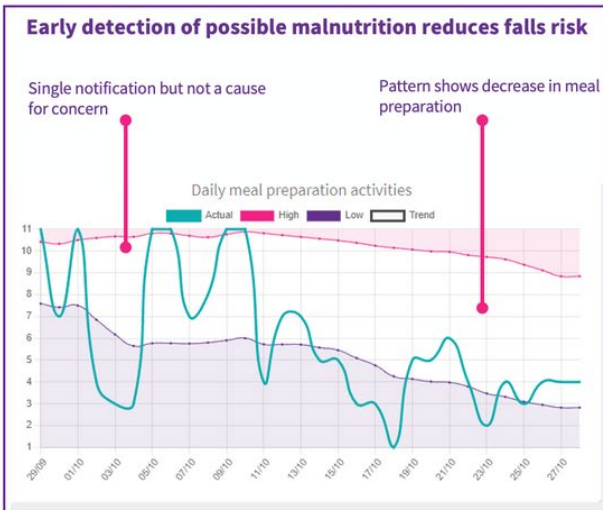


Focus on passive data capturing for more reliable and accurate information.

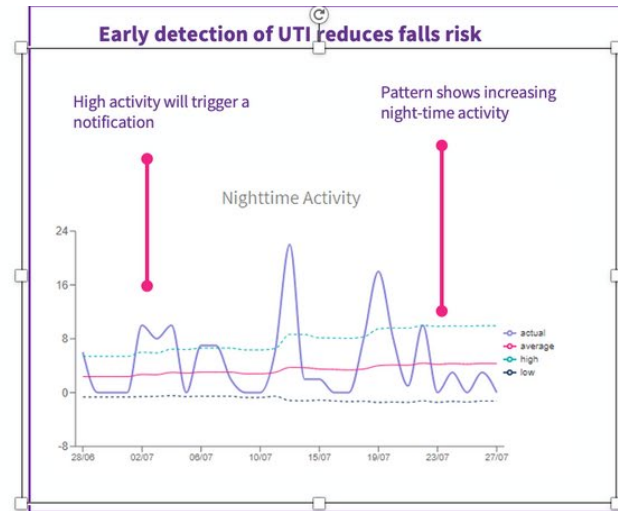


Information can be shared only after permissions have been assigned.

Evidence based reporting



Malnutrition as a Fall Risk Factor. Julius M, Kresevic D, Turcoliveri M, Cialdella-Kam L, Burant, C.



*A new cause to consider in falls: Infection Coexisting systemic infections may need to be routinely considered in patients who present with a fall. By Mollie Durkin. ACP Hospitalist. 10/11/2020

Client trend reports support evidence-based care, providing you with the technological bridge between reactive and proactive care.

Personal Monitoring 24/7

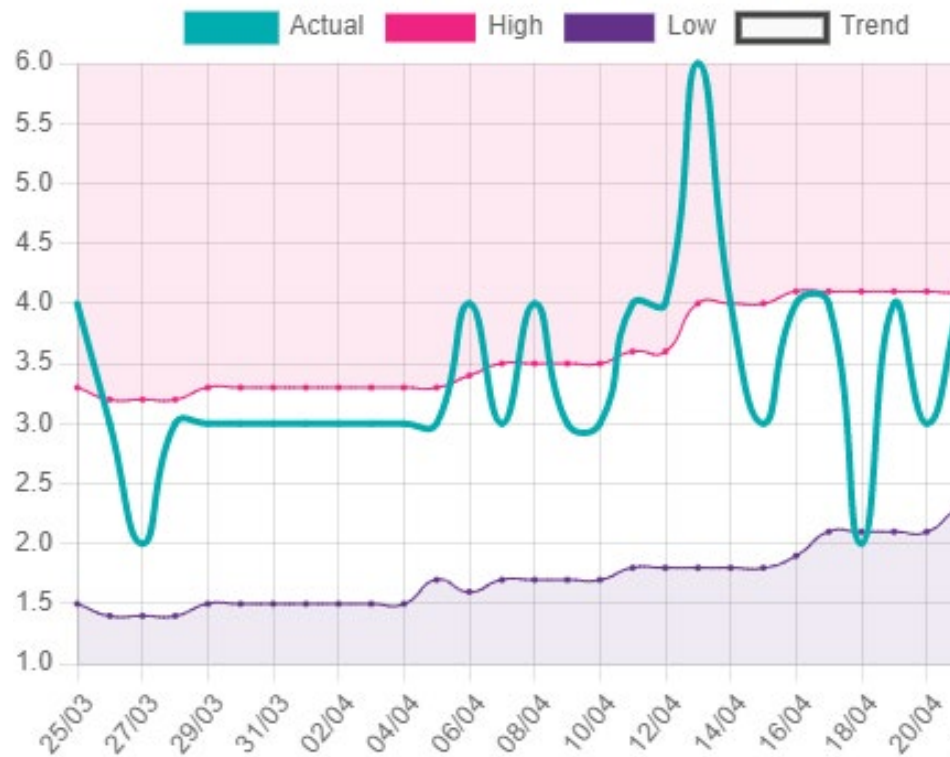


Identified areas for enhancing care



Early detection of illness

Nightly bathroom visit count



R0 Room 003

Details

NOTIFICATION

Daily Update

Message:

Intelicare has detected 'Room 003' bathroom visits are above normal for 2 consecutive days.

- False alarm
- I have attended to it
- I'm responding

Notification History

Sent

20/04/2023 10:17 AM

Message:

Intelicare has detected 'Room 003' bathroom visits are above normal for 2 consecutive days.

X CANCEL ✓ RESOLVE

Delivery on the Technology Roadmap



Focus	Unlocks	Delivers	Timeline
Improved Falls Risk Assessment	Tracking, trending, and alerting for a range of key indicators for increased likelihood of a risk of a fall or incident.	Effective & efficient care delivery. Predictive and optimised staff focus.	Completion Timeline
Residential Care Improved Reporting	Custom reports for care staff with the ability to edit and add comments. Preservation of institutional knowledge and improved internal communications.	A compliance and audit ready tool. Collaborative care between providers and families.	Completion Timeline
Expanded Hardware Support (biopatches and other wearables)	Third-party sensors and automation systems supports entry into commercial facilities, such as residential care.	A flexible platform applicable across multiple sectors, including healthcare and RPM and virtual healthcare delivery.	Completion Timeline

Case Study 1 – WACHS Success

WACHS Pilot Program

- WACHS is piloting InteliCare to assess its ability to improve safety and independence for aged care residents at its Koolberrin Lodge in Narembeen.
- The pilot which began in January 2023 will run for 12 months before a decision is made to deploy InteliCare more broadly across WACHS aged care facilities. WACHS operates 35 aged facilities in regional WA.

Pilot Progress & feedback

WACHS Executive Director Wheatbelt Rachele Ferrari said, **“We’re always looking for new ways to help residents in our aged care facilities live as independently as possible and close to their support networks and loved ones,”** Rachele said. “By investing in digital opportunities, we’re helping to better support healthy ageing in place for country communities. This technology enables more informed care planning between residents, family and staff by providing a better understanding of resident needs.”

Koolberrin Lodge Coordinator Tina Gausden said, **“The technology gives us constant snapshots of a resident’s routine and activity without having to wait for more obvious signs of changes which means we can take a proactive approach to their care. The technology allows us to view and understand residents’ activity levels. Some of our residents have told us they are having higher quality of sleep as the technology reduces night-time disruptions from staff, and it gives them greater peace of mind.”**

WACHS Press Release Link

<https://www.wacountry.health.wa.gov.au/News/2023/06/26/Embracing-technology-to-help-aged-care-residents-live-independently-for-longer>



WA COUNTRY HEALTH SERVICE ANNUAL REPORT 2022-23 | Contents | Overview | Governance | Agency performance | Significant issues | Disclosure and compliance | Appendices | 41

A year beyond compare in country healthcare

Embracing technology to help aged care residents live independently for longer.

We are piloting an innovative assistive technology solution that's improving safety and independence for aged care residents at Koolberrin Lodge in Narembeen.

The pilot program, which has been running since January 2023, harnesses assistive living technology created by InteliCare, using discreet sensors and emergency alerts to detect incidents earlier and give staff a clearer picture of residents' daily routines and care needs.

Executive Director Wheatbelt Rachele Ferrari said the technology allows staff to take proactive action based on resident-specific insights.

“We’re always looking for new ways to help residents in our aged care facilities live as independently as possible and close to their support networks and loved ones,” Rachele said.

“By investing in digital opportunities, we’re helping to better support healthy ageing in place for country communities.

“This technology enables more informed care planning between residents, family and staff by providing a better understanding of resident needs.”

Koolberrin Lodge Coordinator Tina Gausden said residents, their families and staff have already started to see the benefits of the technology.



Koolberrin Lodge Coordinator Tina Gausden and Patient Care Assistant Sue Harper.

“The technology gives us constant snapshots of a resident’s routine and activity without having to wait for more obvious signs of changes which means we can take a proactive approach to their care,” Tina said.

“The technology allows us to view and understand residents’ activity levels. Some of our residents have told us they are having higher quality of sleep as the technology reduces night-time disruptions from staff, and it gives them greater peace of mind.”

Case Study 2 – St John of God HealthCare



St John of God Health Care, one of Australia's largest non-for-profit healthcare providers, wanted to empower their residents to live independently while in supported disability living accommodation.

Utilising in-home sensor technology and AI, InteliCare offers an innovative solution for those living with disability. The smart technology allows St John of God to provide optimal quality care to meet each of their resident's needs, and to monitor for any changes in health. This enables their clients to maintain their independence and reduce intrusions.

Fully integrated sensors, including motions sensors, panic buttons, shower sensors, health metrics and non-wearable fall detectors, will be deployed to 10 supported homes operated by St John of God Accord.

Data collected from these sensors is processed using AI and presented on a consolidated dashboard. This gives carers a complete picture of risk and care needs. Importantly, the dashboard can be configured to allow for multiple clients in each supported house the latest advancements in this leading-edge technology for use across future sites.

"InteliCare demonstrated their system to meet the broadest range of capabilities and configurations. This is critical for us to give our caregivers the best technology to deliver person-centred care and our clients the greatest possible independence."

Lisa Evans, CEO, St John of God Accord

