



InteliCare

InteliLiving for Families of Seniors

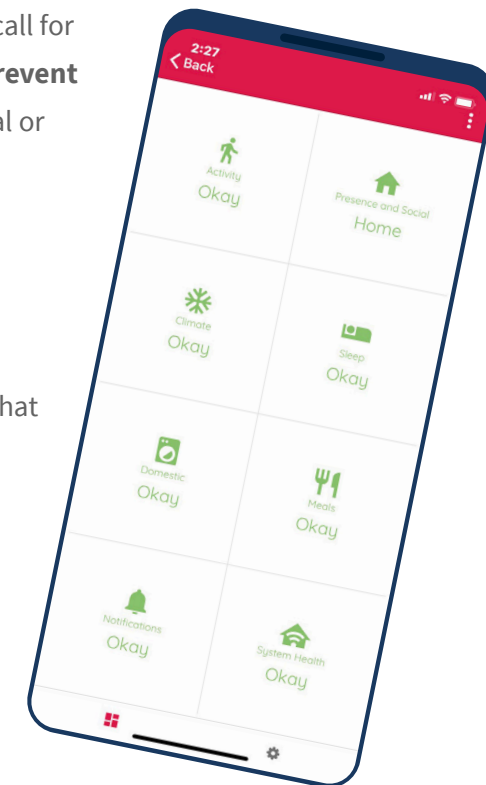
Like many other Australians, as your parent or grandparent gets older, you're concerned that their physical and mental health is declining. However, their desire is to **live independently and in their own home**.

There are several devices available for seniors to call for help after a fall or accident. But they don't **help prevent an accident** that could see them go to the hospital or moved into an aged care facility.

InteliLiving can help

InteliLiving is **discreet smart home monitoring** that allows seniors to live independently and maintain their privacy.

The system tells you when they're ok and alerts you to potential **declines in their physical and mental wellbeing**, allowing you to act before an emergency occurs.



A Smarter Solution for a Better Quality of Life



Peace of Mind

Have comfort knowing your parent or grandparent's wellbeing is monitored 24/7.



Reliable 24/7

Avoid worrying that something has happened, and you're left in the dark. Open the app at any time to view recent activity.



Easy to Use

Seniors don't need to charge a device or learn how to use IntelliLiving, it runs passively on its own. You'll automatically receive notifications on your mobile phone.



No Pestering

You won't need to constantly be "checking in". You'll receive a notification every day to let you know your parent or grandparent is active.



Stay at Home

Avert relocating your parent or grandparent to an aged care facility and uprooting them from their community and the lifestyle they love.



Avoid Emergencies

Don't wait for an accident to happen. You'll receive advice if your parent or grandparent starts to decline.



No Cameras

Discreet activity monitoring via smart sensors means there are no cameras and no invasion of the senior's privacy.



Shared by the Family

IntelliLiving allows multiple people to receive updates, keeping your family connected and sharing responsibility.



InteliLiving starter pack with sensors

Tailored to Each Person

InteliLiving uses the latest smart home technology and advanced analytics to continuously learn the senior's behaviour patterns.

What does this mean?

Each day InteliLiving gets better and better at detecting changes in your parent or grandparent's physical and mental wellbeing. The earlier you install InteliLiving, the better it will perform, and the more likely you are to prevent the person you care about having an accident in their home.

Why get InteliLiving now

***Fact:** Australia has a growing over 65 population and not enough services to support them. In the next decade, Australia's aged care providers will be stretched to cover the increase in need.*

Installing InteliLiving in a senior's home now will allow them to live happily and independently in their existing home and community, while you have peace of mind they are active.

Using InteliLiving will help you prevent an emergency before it happens by monitoring...

✓ Arise Times

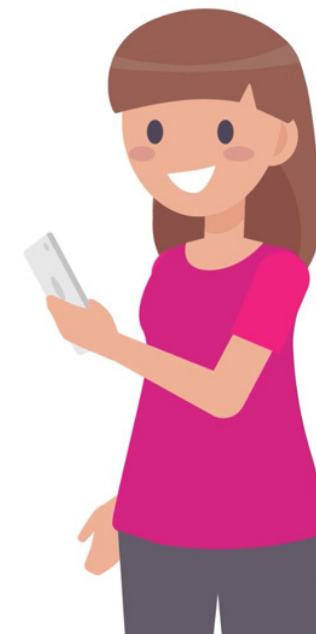
✓ Climate

✓ Social Isolation

✓ Sleep Activity

✓ Meal Preparation

✓ Bathroom Visits





InteliLiving hub with notification

Be alerted when it matters

- Haven't arisen out of bed
- Not preparing meals
- Not leaving the house
- Their home is too cold or hot
- Activity is lower than normal
- Not using the bathroom
- Are socially isolated

InteliLiving can be free

If a senior has been approved for a Home Care Package (HCP), InteliLiving can be supplied by an HCP Provider at no out of pocket cost.

If a senior has been approved for an NDIS, InteliLiving's cost can be partially or fully covered.

6 simple steps to get InteliLiving

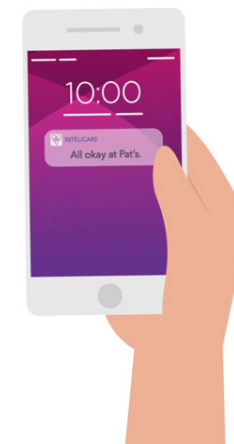
1. Speak with your parent or grandparent about installing InteliLiving in their home and how it will allow them to live independently and at home for longer. For more information download the How to Discuss InteliLiving with Your Parent or Grandparent.
2. Purchase InteliLiving on the website or request from HCP or NDIS.
3. Install InteliLiving by following the instructions manual.
4. Download the InteliLiving app on Google Play or the App Store.
5. Set up the household and connect to the internet.
6. Start receiving notifications.

Much less expensive than...

- A stay in hospital as a result of a fall
- Forcing them to sell their home and move
- Full time aged care
- Full time carers



**Contact InteliCare to enquire
about requesting InteliLiving
from HCP or NDIS.**



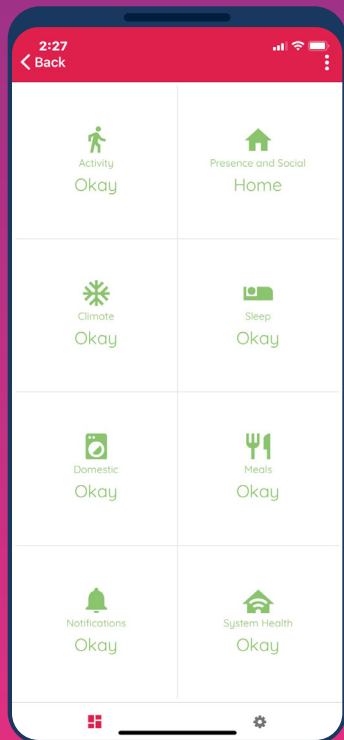
What InteliLiving Customers Say



“

The difference in mum’s demeanour is palpable, and she is now genuinely loving life. She claims she now has a guardian angel looking over her shoulder.

— Greg, InteliLiving User



InteliLiving app dashboard



1300 001 145



info@intelicare.com.au



www.intelicare.com.au

